

Grid Tied Inverter

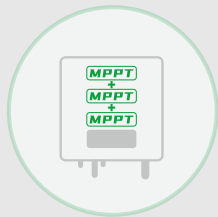
Single Phase: GT1-7k/8k/9k/10k T2

The Livoltek GT1 7.0 / 8.0 / 9.0 / 10.0-T2 photovoltaic inverter is developed specifically for high-power single-phase residential models, offering compatibility with complex rooftops, private residences, villas, and small commercial applications. It features three MPPTs, each with an input current of 16A, making it suitable for high-efficiency large modules and significantly increasing power generation. With a built-in SPD II module, it reduces external installation costs for labor and wiring. The local AP mode and remote Wi-Fi dual monitoring provide users with the best inverter performance, convenience, and stability.



Features

- 3 MPPTs trackers
- DC input 16A per string
- Built-in Type II DC&AC SPD
- Integrated arc fault circuit interrupter (Optional)
- 24/7H live monitoring both online
- Limitation Export control



Triple MPPTs



Export Limitation



Optional AFCI Module

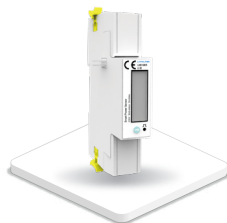


24*7 Remote Monitoring

Compatible Products



Wi-Fi Dongle



Smart Meter



Monitoring System

Specifications

Model	GT1-7KT2	GT1-8KT2	GT1-9KT2	GT1-10KT2
PV Input				
Max. DC Input Power	10500Wp	12000Wp	13500Wp	15000Wp
Max. DC Input Voltage	600V			
Min PV Input Voltage	70V			
Start-up DC Input Voltage	90V			
Nominal DC Input Voltage	360V			
MPPT Operating Range	70-560V			
Max. DC Input Current	16A+16A+16A			
Max. Short Circuit Current	20A+20A+20A			
No. of MPPTs/Strings per MPPT	3/1			
AC Output				
Nominal Output Power	7000W	8000W	9000W	10000W
Max. Apparent Power	7700VA	8800VA	9900VA	11000VA
Rated AC Grid Output Current	31.8A	36.4A	40.9A	45.5A
Max. AC Output Current	35A	40A	45A	50A
Rated AC Grid Voltage	220V/230V/240V, L+N+PE			
AC Grid Voltage Range	154V-290V (Adjustable)			
Rated Grid Frequency	50Hz/60Hz			
Grid Frequency Range	45Hz-55Hz/55Hz-65Hz (Adjustable)			
Power Factor	> 0.99 Rated Power (Adjustable 0.8 Leading - 0.8 Lagging)			
Output THDi (@Nominal Output)	<3%			
Efficiency				
Max. Efficiency	98.00%	98.00%	98.00%	98.00%
Euro Efficiency	97.50%	97.50%	97.50%	97.50%
MPPT Efficiency	>99%			
Protection				
Surge Arrester	Type II			
PV Current Detection	Support			
Over Current Protection	Support			
AC Short Circuit Protection	Support			
Over Voltage Protection	Support			
Anti-islanding Protection	Support			
Ground Fault Monitoring	Support			
Residual Current Monitoring Unit	Support			
DC Reverse Polarity Protection	Support			
AC auxiliary power supply (APS)	Optional			
Anti-arc Protection	Optional			
General Data				
Dimension (W*H*D)	465*425*180mm			
Weight	19.5kg			
Protection Degree	IP65			
Cooling	Natural Cooling			
Operating Temperature Range	-30°C ~ +60°C (Derating at 45°C)			
Night Self Consumption	< 1W			
Display	LED+APP			
Communication	RS485(Meter), Wi-Fi			
Topology	Transformerless			
Certifications and Standards				
Grid Regulation	ORDINANCE No.140, OF MARCH 21, 2022, IEEE1547			
Safety/EMC Standard	IEC62109-1/-2, UL1741, IEC61000-6-1/2/3/4			
Standard Warranty	10 Years			