

# Grid Tied Inverter

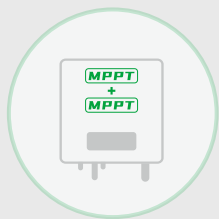
Single Phase: GT1-2K5/3K/3K3/3K6/4K/5K/6K D2

LIVOLTEK GT1 2.5~6K-D2 grid-tied inverters adopt modern design for residential requirements. Its compact size and dual MPPTs can be utilised in complex design environments. The maximum input current per string is up to 16A, making it compatible with large 182+ PV modules. Additionally, it features an integrated AFCI (Arc Fault Circuit Interrupter) for DC arc fault protection, providing a high level of safety. Our interactive Wi-Fi monitoring via our App or web platform allows for smart remote supervision and maintenance, making your solar energy pursuit effective and efficient.



## Features

- DC input 16A per string
- Integrated AFCI(optional)
- Lower startup & Dual MPPT
- 150% oversizing and 110% overloading
- 7\*24 hours monitoring and maintenance
- Plug-and-play design for quick installation



Dual MPPTs



Export Limitation



Optional AFCI Module

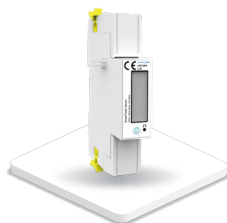


7\*24 Remote Monitoring

## Compatible Products



Wi-Fi Dongle



Smart Meter



Monitoring System

# Specifications

Model	GT1-2K5D2	GT1-3KD2	GT1-3K3D2	GT1-3K6D2	GT1-4KD2	GT1-5KD2C	GT1-5KD2	GT1-6KD2
<b>PV Input</b>								
Max. DC Input Power	3750Wp	4500Wp	4950Wp	5400Wp	6000Wp	7500Wp	7500Wp	9000Wp
Max. DC Input Voltage	600V							
Min PV Input Voltage	70V							
Start-up DC Input Voltage	90V							
Nominal DC Input Voltage	360V							
MPPT Voltage Range	70-550V							
Max. PV Current	16A+16A							
Max. Short Circuit Current	20A+20A							
No. of MPPTs/Strings per MPPT	2/1							
<b>AC Output</b>								
Nominal AC Power	2500W	3000W	3300W	3600W	4000W	5000W	5000W	6000W
Max. Apparent Power	2750VA	3300W	3630VA	3690VA <sup>[1]</sup>	4400VA	5000VA	5500VA <sup>[3]</sup>	6600VA
Rated AC Grid Output Current	11.4A	13.6A	15A	16.3A	18.2A	22.7A	22.7A	27.3A
Max. AC Output Current	12.5A	15A	16.5A	18A <sup>[2]</sup>	20A	22.7A	25A <sup>[4]</sup>	30A
Rated AC Grid Voltage	220V/230V/240V, L+N+PE							
AC Grid Voltage Range	154V-290V (Adjustable)							
Rated Grid Frequency	50Hz/60Hz							
Grid Frequency Range	45Hz-55Hz/55Hz-65Hz (Adjustable)							
Power Factor	> 0.99 Rated Power (Adjustable 0.8 Leading - 0.8 Lagging)							
THDi, Rated Power[%]	<3%							
<b>Efficiency</b>								
Max. Efficiency	97.70%	97.70%	97.70%	97.70%	97.70%	97.70%	97.70%	97.70%
Euro Efficiency	96.50%	96.50%	96.50%	96.50%	97.00%	97.00%	97.00%	97.00%
MPPT Efficiency	>99%							
<b>Protection</b>								
Surge Arrester	Type II							
Over Current Protection	Support							
AC Short Circuit Protection	Support							
Over Voltage Protection	Support							
Anti-islanding Protection	Support							
Ground Fault Monitoring	Support							
Residual Current Monitoring Unit	Support							
DC Reverse Polarity Protection	Support							
AC Auxiliary Power Supply (APS)	Optional							
Anti-arc Protection	Optional							
<b>General Data</b>								
Dimension (W*H*D)	368*325*150mm							
Weight	12kg							
Protection Degree	IP65							
Cooling	Natural Cooling							
Operating Temperature Range	-30°C ~ +60°C (Derating at 45°C)							
Display	LED+APP							
Communication	RS485(Meter), Wi-Fi							
Topology	Transformerless							
<b>Certifications and Standards</b>								
Grid Regulation	"IEC61727, IEC62116, ORDINANCE No. 140, OF MARCH 21, 2022, EN50549"							
Safety/EMC Standard	IEC/EN 62109-1/-2, IEC/EN 61000-6-1/-2/-3/-4							
Standard Warranty	10 Years							

Remarks: [1]: 3690(3680W for G98); [2]: 18(16.7A for G98); [3]: 5500(4999W for AS4777); [4]: 25(22.7A for AS4777);